



# REVIVE AIR

## SENSATION SLING | ALUMINUM

Available in: **A** Air

The mid-century modern era was a great time to be in furniture design. Decades later, this iconic style is experiencing a renaissance, but with all of the benefits of current technology. The Revive air collection uses our unique Sensation sling material, which offers incredible stretch, memory, and UV resistance, providing the look and feel of a cushion with none of the maintenance.



ARMLESS CHAT CHAIR

**A** 61AR350

H: 35" W: 26.5" D: 32.5"  
Seat Ht: 18" Arm Ht: N/A



CHAT CHAIR

**A** 61AR390

H: 35" W: 33" D: 33"  
Seat Ht: 18" Arm Ht: 25"



SWIVEL CHAT CHAIR

**A** 61AR902

H: 35" W: 33" D: 32.5"  
Seat Ht: 18" Arm Ht: 25"



LEFT ARM CHAT CHAIR

**A** 61AR39L

H: 35" W: 30" D: 33"  
Seat Ht: 18" Arm Ht: 25"



RIGHT ARM CHAT CHAIR

**A** 61AR39R

H: 35" W: 30" D: 33"  
Seat Ht: 18" Arm Ht: 25"



ARMLESS LOVESEAT

**A** 61AR42N

H: 35" W: 53" D: 32.5"  
Seat Ht: 18" Arm Ht: N/A



LOVESEAT

**A** 61AR420

H: 35" W: 59.5" D: 33"  
Seat Ht: 18" Arm Ht: 25"



LEFT ARM LOVESEAT

**A** 61AR42L

H: 35" W: 56.5" D: 33"  
Seat Ht: 18" Arm Ht: 25"



RIGHT ARM LOVESEAT

**A** 61AR42R

H: 35" W: 56.5" D: 33"  
Seat Ht: 18" Arm Ht: 25"



ARMLESS SOFA

**A** 61AR43N

H: 35" W: 79" D: 32.5"  
Seat Ht: 18" Arm Ht: N/A



SOFA

**A** 61AR430

H: 35" W: 85.5" D: 33"  
Seat Ht: 18" Arm Ht: 25"



LEFT ARM SOFA

**A** 61AR43L

H: 35" W: 82.5" D: 33"  
Seat Ht: 18" Arm Ht: 25"



RIGHT ARM SOFA

**A** 61AR43R

H: 35" W: 82.5" D: 33"  
Seat Ht: 18" Arm Ht: 25"



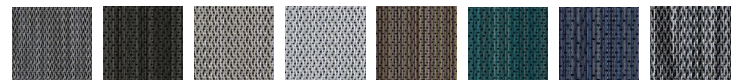
MODE END TABLE/CORNER UNIT

1310020

H: 20" W: 35.5" D: 23"

### AVAILABLE FABRIC OPTIONS

Air collections are available in Sensation sling fabrics only. Look for the air collection "A" icon.



AGATE II BARK BISQUE CAMEO II CEDAR II LAGOON STRATUS ZINC II

**Note:** Depending on the desired configuration and use, we recommend ordering multi-seat units to eliminate multiple legs for a cleaner look (i.e. order an armless sofa versus three armless chat chairs).