

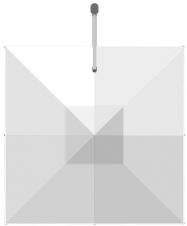
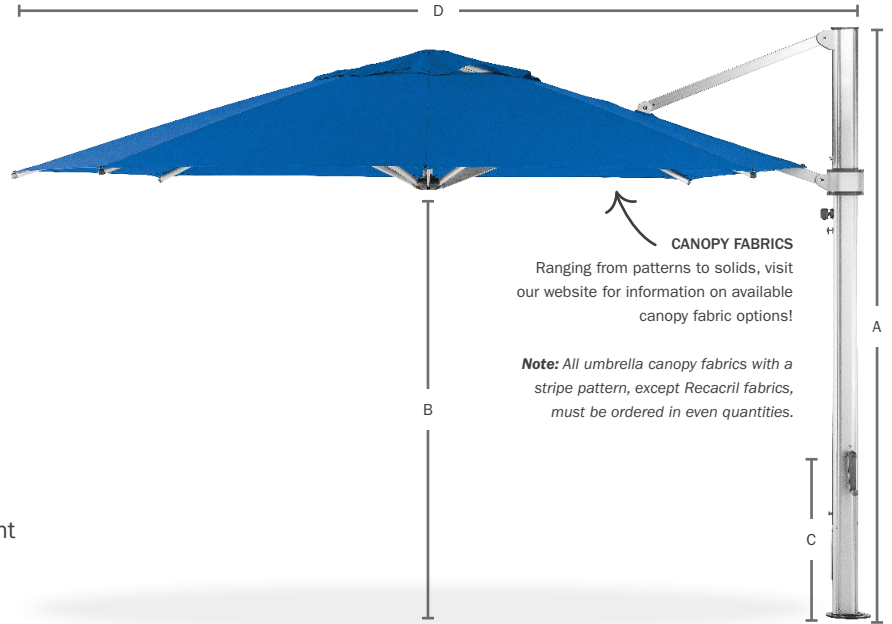
# SOREN UMBRELLA CANTILEVER

HOMECREST™  
OUTDOOR LIVING

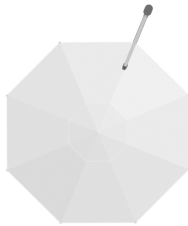
Made in the USA · www.homecrest.com

This umbrella combines style with size, strength, and durability to provide a lasting solution to your shade needs. The Soren cantilever umbrella is available in a 13' octagon and a 10' square with five base options. Its 360° rotation and infinite tilt system allow for easy opening and closing, while providing complete shade flexibility. Heavy gauge extruded aluminum and stainless-steel parts on a marine-grade, corrosion-resistant aluminum frame ensure the Soren is ideal for both commercial and residential environments. Choose from among dozens of high-quality fabrics for a beautiful, low-maintenance shade solution.

- Full 360° rotation and the infinite tilt system allow for countless tilt angles, providing hours of maximum shade regardless of the position of the sun
- Maintenance-free stainless steel hardware
- The crank lift is built for commercial use and is designed for smooth and effortless operation in any environment
- The mast and all critical joints are extruded aluminum, ensuring unmatched strength and durability
- Engineered to withstand 35 MPH winds; the included wind stabilizer kit increases this by 5 MPH
- Multiple mounting options are available, either permanent or semi-permanent, for installation on any surface



**10' SQUARE**  
U 883ECU-SQ - 108 lbs  
A - Overall Height: 110"  
B - Clearance: 82"  
C - Closed Clearance: 26"  
D - Overall Depth: 135"  
Mast Diameter: 3.3" x 5"



**13' OCTAGON**  
U 880ECU - 112 lbs  
A - Overall Height: 110"  
B - Clearance: 82"  
C - Closed Clearance: 32"  
D - Overall Depth: 163"  
Mast Diameter: 3.3" x 5"

## PRODUCT FEATURES



INFINITE TILT SYSTEM



EXTRUDED ALUMINUM MAST



EXTRUDED ALUMINUM ON ALL CRITICAL JOINTS

**Note:** Umbrella clearance dimensions are measured while not mounted in a base. Depending on the selected base, these clearance measurements will change. All dimensions have a +/-5" tolerance based on multiple variables: pin placement height, crank tautness, and fabric weight.

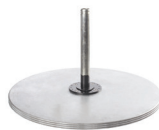
**BASE OPTIONS** **Note:** Umbrella bases are in brushed silver, except for the direct surface mount, which is onyx.



**STEEL MAX**  
NGU-550-E - 150 lbs  
H: 5" W: 45" D: 45"  
Pavers not included.



**STEEL MAX**  
NGU-550 - 550 lbs  
H: 5" W: 45" D: 45"  
Base includes pavers.



**MAX PLATE STACK**  
ECU40G-X3 - 555 lbs  
H: 2" W: 40" D: 40"



**IN-GROUND MOUNT**  
ECU-IG - 18 lbs  
H: 20" W: 8" D: 8"  
Can be mounted in concrete, soil and hard clay.



**DIRECT SURFACE MOUNT**  
ECU-DP - 12 lbs  
H: 5" W: 12.5" D: 12.5"  
Can be mounted to concrete, wood deck or any stable solid surface.

## SOREN POLE COLOR



BRUSHED SILVER

Available in: U Umbrella